



Total Solution Provider in Saw Device

SL14526AD1

145.0 MHz IF SAW Filter
27.0 MHz Bandwidth
Revision 1: 16. Feb. 2009



- Electrical Characteristics
 - Package Dimensions
 - Testing Environment
 - Frequency Characteristics
-

SAWNICS Inc.

460 Cheonheung-ri, Seonggeo-eup, Cheonan-si, Chungcheongnam-do, 330-836 / Korea.
Tel: +82 41 550 9372 / Fax: +82 41 550 9399 / www.sawnics.com

□ Electrical Characteristics

Maximum Ratings

Parameters Description	Unit	Minimum	Typical	Maximum
Operation Temperature Range	°C	-10	-	70
Storage Temperature Range	°C	-30	-	80
Maximum DC Voltage	V	-	-	10
Maximum Input Power	dBm	-	-	10
Source Impedance (single ended) ⁽¹⁾	Ω	-	50	-
Load Impedance (single ended) ⁽¹⁾	Ω	-	50	-
Package type & size	D1			
Length x Width	mm ²	-	20.0 x 9.8	-
Height	mm	-	-	1.8

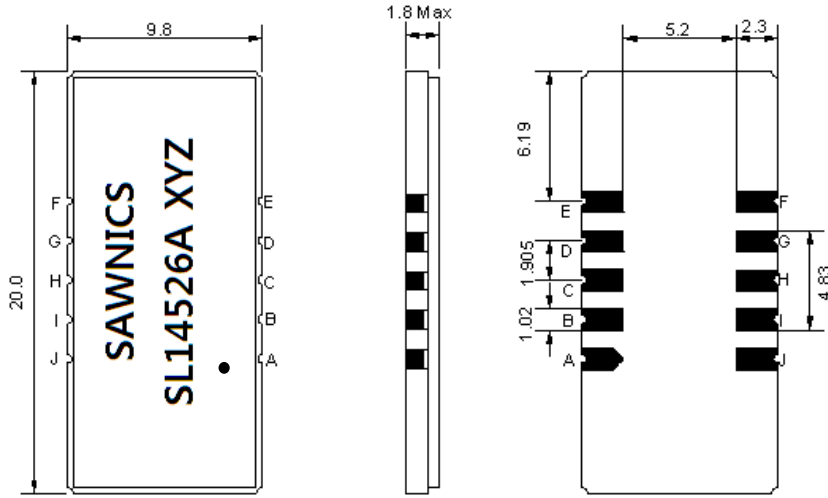
Electrical Specification

Parameters Description	Unit	Minimum	Typical	Maximum
Center Frequency (Fo)	MHz	-	145.0	-
Insertion Loss at Fo	dB	-	17.6	21.0
Group Delay Variation (Fo±12.48MHz)	ns	-	45	70
Absolute Delay	us	-	1.05	-
Passband Ripple (Fo±12.48MHz)	dB	-	0.42	0.90
Bandwidth at -1dB	MHz	26.50	27.05	-
Bandwidth at -10dB	MHz	-	28.78	28.96
Bandwidth at -20dB	MHz	-	29.65	-
Bandwidth at -40dB	MHz	-	30.90	-
Ultimate Rejection	dB	-	42	-
Temperature coefficient	ppm/°C	-	-86	-

Notes : (1) With Matching Network (Ref. Testing Environment Circuit as shown below).

Those impedances could be modified with different impedance values and/or structures, if necessary.

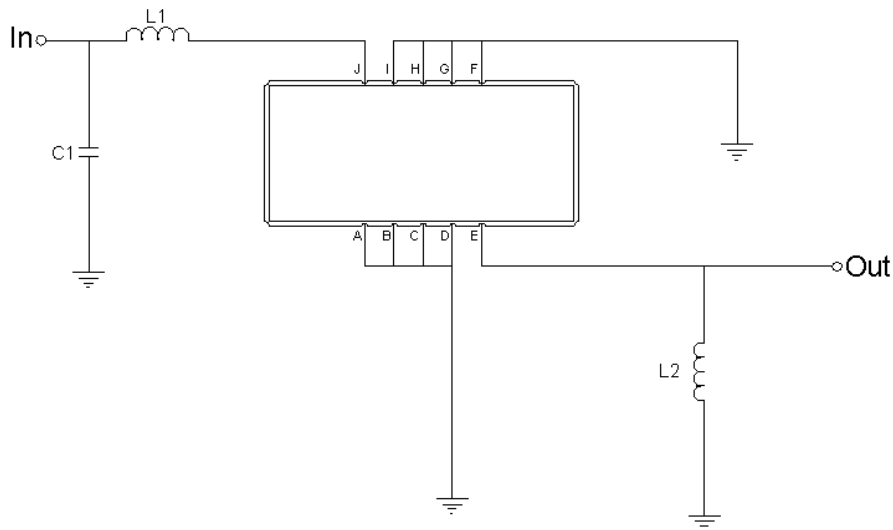
Package Dimensions



- ① SAWNICS: Brand
- ② SL14526A: Model Name
- ③ X : Date Code (Year)
- ④ Y : Date Code (Month)
- ⑤ Z : Date Code (Date)
- : Index Dot

Pin Description	
A, B, C, D, F, G, H, I	Ground
J	Input
E	Output

Testing Environment

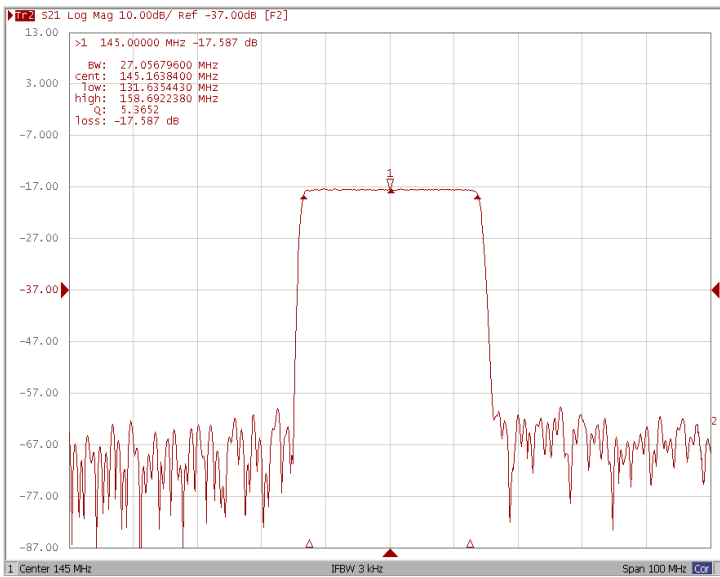


Test Fixture & Values	
Input	L1=39nH, C1=18pF
Output	L2=39nH
Source/Load Impedance	50 Ω

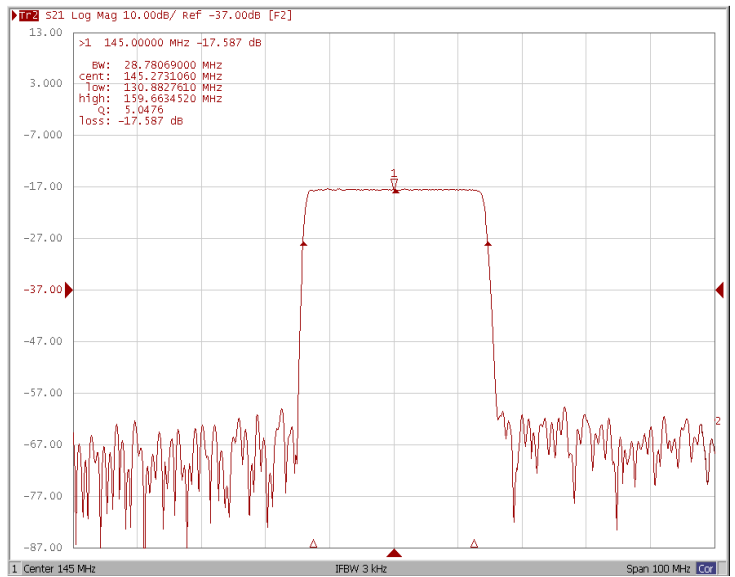
□ Frequency Characteristics

Frequency Response

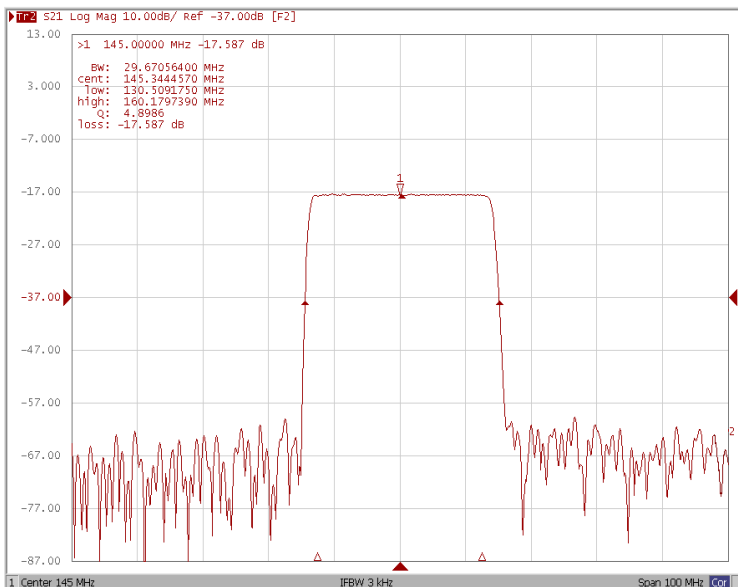
Bandwidth at -1.0 dB



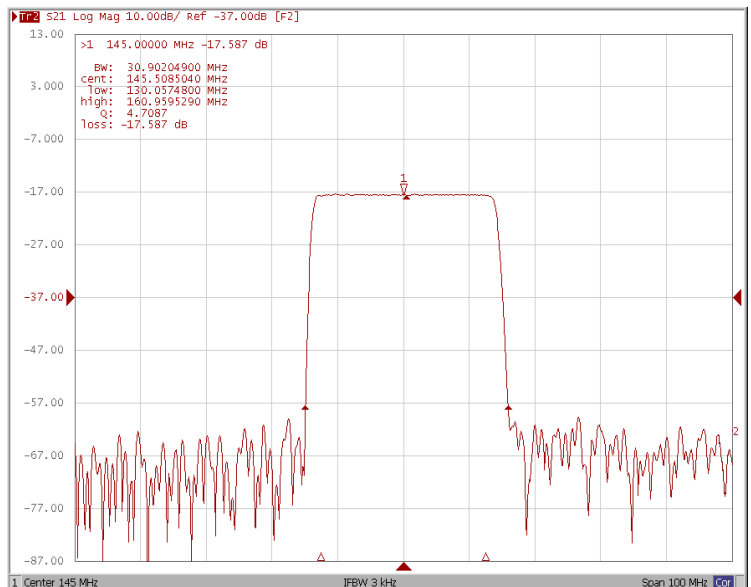
Bandwidth at -10.0 dB



Bandwidth at -20.0 dB



Bandwidth at -40.0 dB



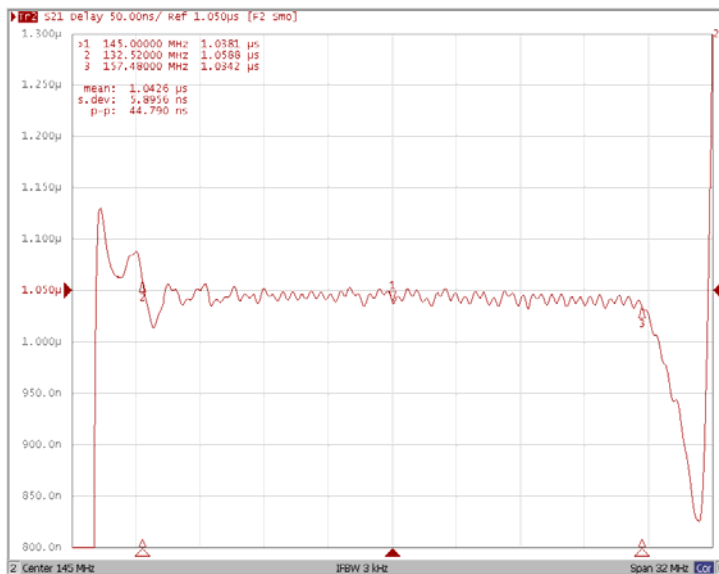
Frequency Characteristics

Frequency Response

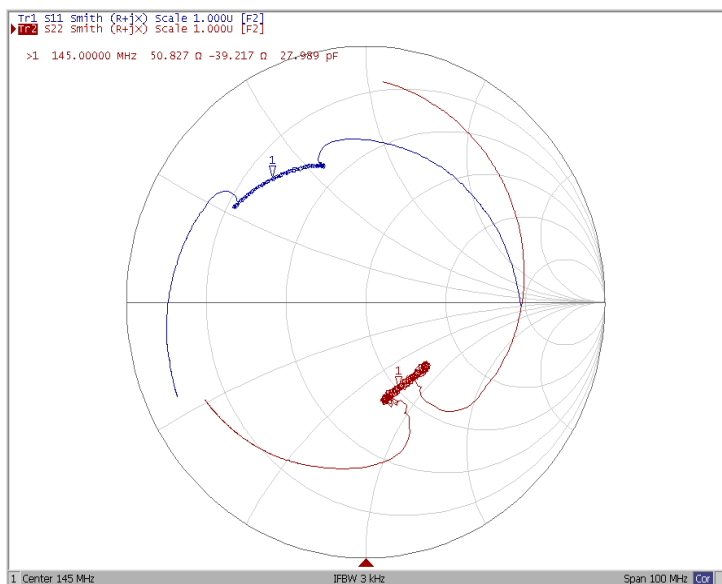
Ripple Variation $Fo \pm 12.48\text{MHz}$



Group Delay Variation $Fo \pm 12.48\text{MHz}$



Smith Chart



VSWR

